



>> Quick Start Guide for Sprint Mobile Broadband Devices on Mac OS X Tiger

- Ovation™ U727 by Novatel Wireless
- Merlin™ EX720 by Novatel Wireless
- Ovation U720 by Novatel Wireless
- Merlin S720 by Novatel Wireless



This document describes how to use the Mac OS® X Network support of the Sprint Mobile Broadband Connectivity Devices with PowerBook® G4 computers, MacBook® computers and iMac® desktop computers running Mac OS X Tiger.

Mac Computer Requirements:

You will need one of the following computers running Mac OS X Tiger version 10.4.6 or higher:

- A PowerBook G4 computer with PC Card (PCMCIA) slot or USB port, depending on the Mobile Broadband Device you purchased
- A MacBook computer with USB port or a MacBook Pro computer with a PC Express slot or USB port, depending on the Mobile Broadband Device you purchased
- An iMac computer with USB port

To check your OS version, from the Apple menu () choose **About This Mac**. If your version is earlier, visit: www.apple.com/support/downloads for upgrading instructions, or, in Finder™, choose **GO > Applications > System Preferences**

If your device is not activated:

You will need to contact Sprint Customer Service to get your device set up on an account. Follow these steps:

- Ensure you have the items listed on the screen and call the phone number listed
- Follow the instructions of the Sprint Customer Service specialist to activate your device. Write down the following information provided to you:

My Sprint Device Phone Number (MDN): _____

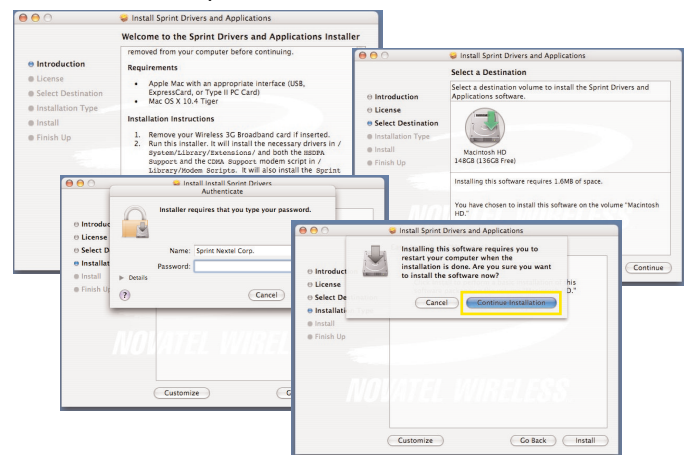
My MSID: _____

Master Subsidy Lock (MSL): _____

Installing your Sprint Mobile Broadband Device on your Mac Computer:

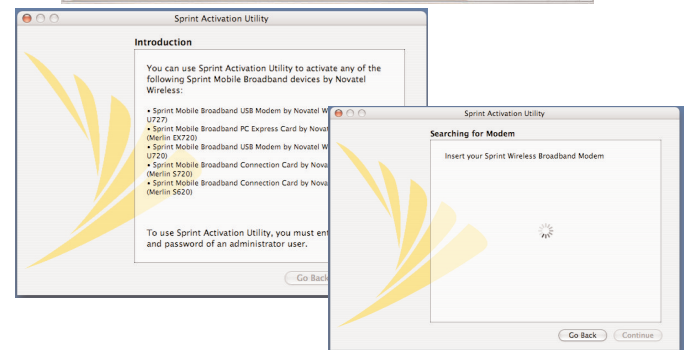
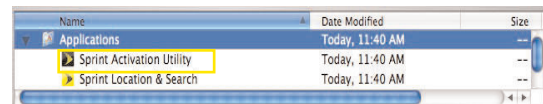
- If you purchased a U727, insert the CD that came with your device and run the Mac package file
- If you do not have that CD, or purchased a U720, EX720 or S720, visit www.sprint.com/downloads, select **Mac OS** as the operating system, and download and install the "NovatelMacIntegration.zip" package available under "Instructions for EVDO Rev A Devices S720,U720,EX720,and U727"

- Follow the on-screen installation instructions. You will be required to sign in as administrator to install, and asked to restart your computer upon completion
- Click **Continue Installation** to complete the installation process



Activating your Sprint Mobile Broadband Device on the Sprint Network:

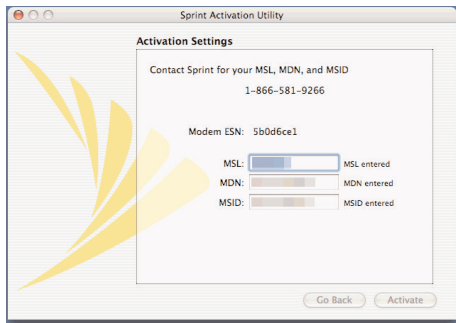
- Once your computer has restarted, open your **Applications** folder in the hard drive and launch the **Sprint Activation Utility** application
- Disconnect any other connections to the internet available - turn off your AirPort connection and unplug any ethernet connections
- Follow the instructions on screen to insert your device



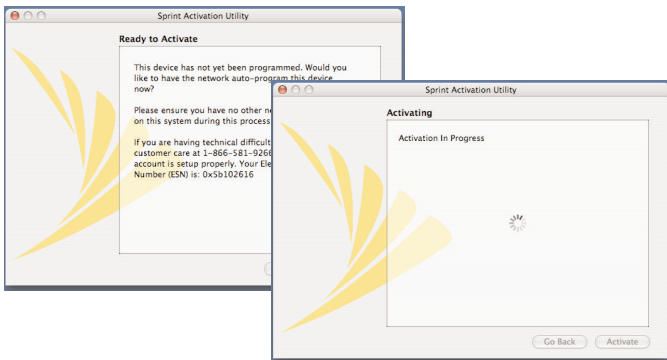
Warning! When inserting or removing your device, always grip it by its sides. Gripping the device by its antenna may damage the device.

- Follow the on screen prompts to complete the activation process
- If you are using a U720, EX720 or S720, you will be prompted at this time to enter the information from page 1: MSL, MDN, and MSID

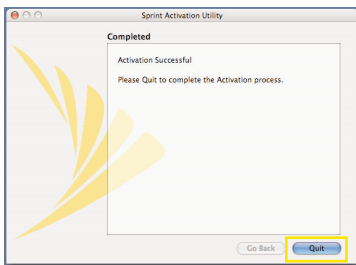
NOTE: You will need to hit the **tab** or **enter** key after typing in the MSID to initiate the **activate** button



- If you are using a U727, the device will be auto-programmed. Just follow the on screen prompts

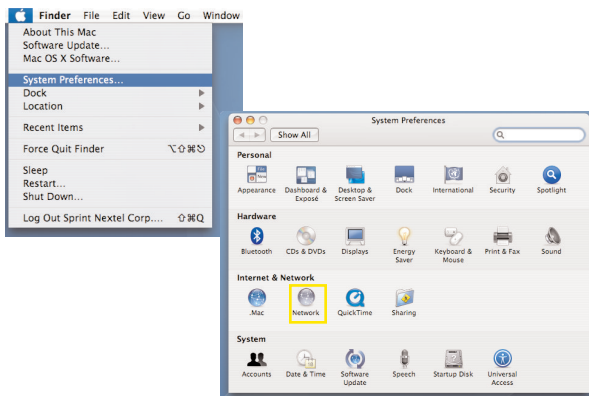


- Once you've activated your device you can close the Sprint Activation Utility by selecting **Quit**

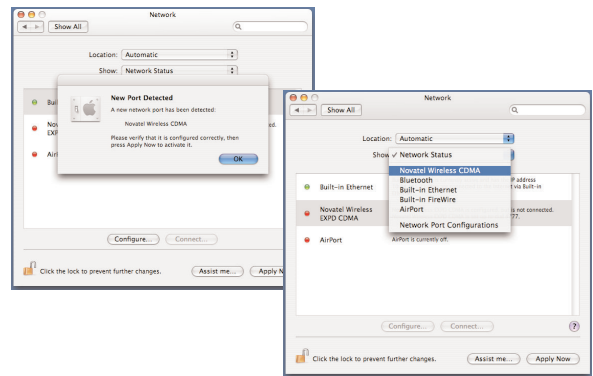


Setting up your Mac Network Connection:

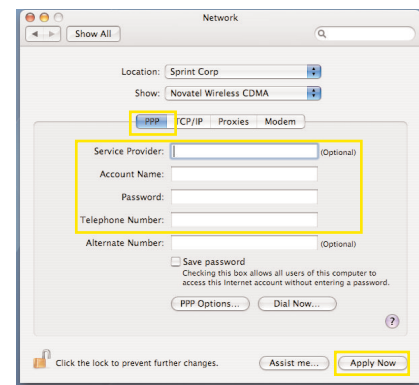
- Launch **System Preferences** from the Apple menu and select the **Network** icon



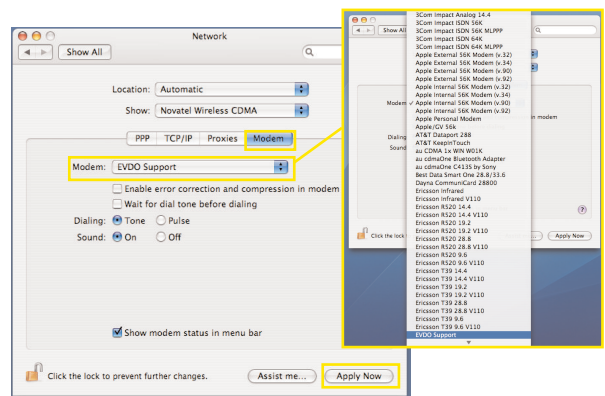
- When you enter Network Preferences you will see a dialog box recognizing the device. Click **OK** to close the dialog box
- Select your device in the **Show** pull down menu



- Click the **PPP** tab and enter "#777" in the Telephone Number field
- Click the **Apply Now** button

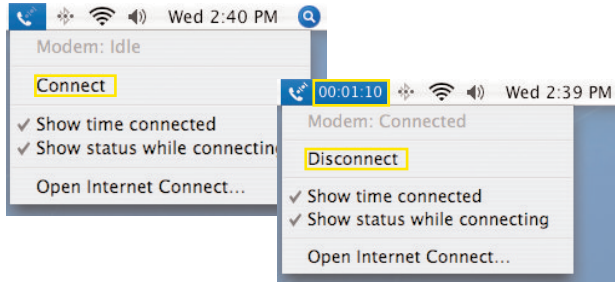


- Click the **Modem** tab and change the Modem selection in the pull down menu to "EVDO Support"
- Uncheck the two boxes "Enable error correction..." and "Wait for dial tone..." if preselected
- Check the box "Show modem status in menu bar"
- Click the **Apply Now** button

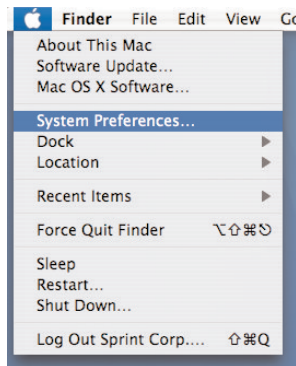


- You can now connect to the Sprint Network. To use your Mobile Broadband Device going forward, follow the instructions provided based on your computer model:

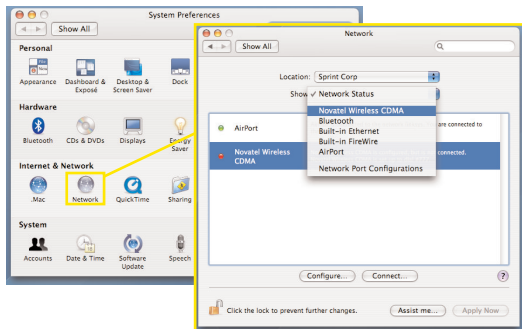
- If your computer is an Intel-based iMac or MacBook: From the Phone menu you can connect/disconnect your internet connection. While connected, you can also see the duration of your connection



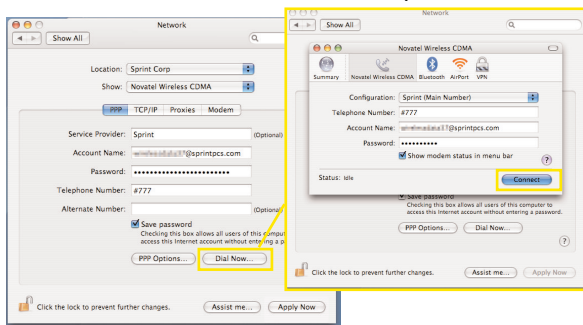
- If your computer is a PowerPC-based PowerBook or iMac G-series:
 - Click **System Preferences** from the Apple menu ()



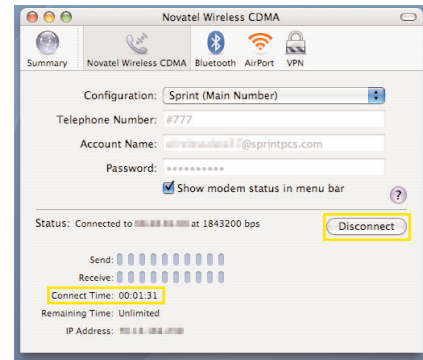
- Select the **Network** icon and then select the "Novatel Wireless CDMA" option from the **Show** pull down menu



- In the PPP tab, click **Dial Now** and then **Connect** to connect your Sprint Mobile Broadband Device to the Sprint Network

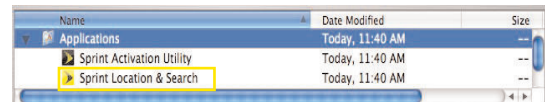


- You are now connected to the Sprint Network. From this window you can connect/disconnect your internet connection. While connected, you can also see the duration of your connection

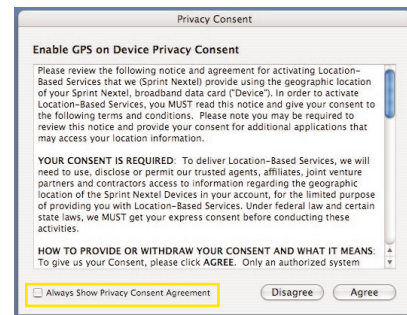


Using Sprint Location & Search Utility:

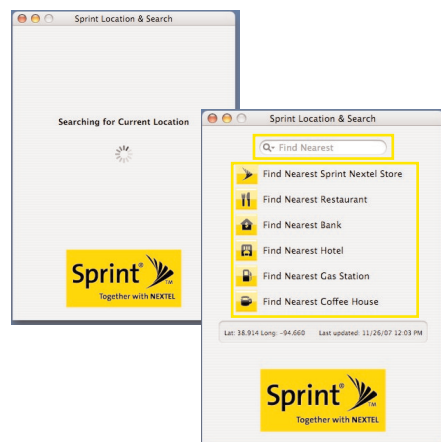
- Make sure you have established a Mobile Broadband connection
- Open your **Applications** folder in the hard drive and launch the **Sprint Location & Search** application



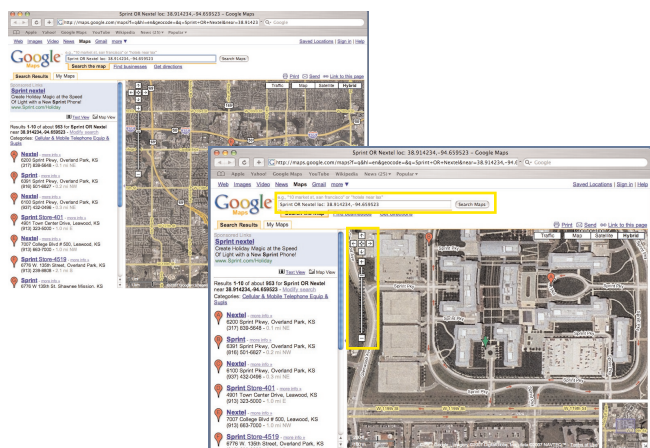
- Review the **Privacy Consent** screen. If you'd prefer not to see this screen each time you launch the application, uncheck the box "Always Show Privacy Consent Agreement"



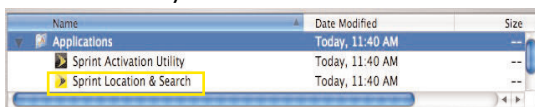
- The software will search for your location. Once found, you can enter a search or select one of six pre-set search options



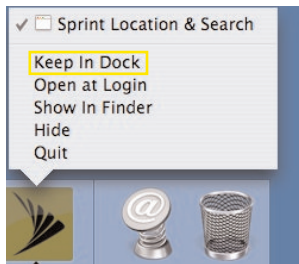
- Your search results will appear in Google maps. You can utilize the zoom capabilities to narrow your search results or enter a new search location



- There are multiple ways to access **Sprint Location & Search** for future use:
 - Find the application in the **Applications** folder of your hard drive



- With the application launched, click and hold your mouse cursor on the application icon in your doc. When the menu appears, select **Keep in Dock**



To uninstall the Mobile Broadband Device drivers and applications:

If you would like to remove this driver and its associated files from your machine in the future, delete the following files (requires Administrator permissions):

/Applications/Sprint Activation Utility
 /Applications/Sprint Location & Search
 /System/Library/Extensions/NovatelWireless3G.kext
 /System/Library/Extensions/NovatelWirelessFilter.kext
 /Library/Modem Scripts/EVDO Support
 /Library/Modem Scripts/HSDPA Support