



MacSpeech[®] Scribe

Quickstart Guide





MacSpeech® Scribe

Registration Code

GETTING STARTED

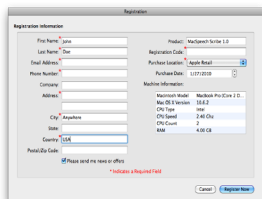
1



Install MacSpeech Scribe.

Insert the MacSpeech Scribe Application Disc (black label) and drag the MacSpeech Scribe icon to your Applications folder. Find and launch the MacSpeech Scribe application. MacSpeech Scribe will check your Mac for the resources it requires and will prompt you to insert the MacSpeech Scribe Data Disc (white label). This will install the necessary data for you and may take a few moments. Note: Owners of MacSpeech Dictate may not be prompted for the MacSpeech Scribe Data Disc.

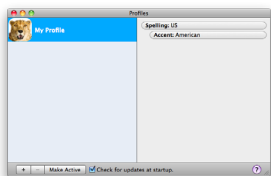
2



Register MacSpeech Scribe.

Once installation is complete, MacSpeech Scribe displays the license agreement. Click Accept after reviewing it. MacSpeech Scribe now asks for your registration code (which is printed above). Important note: In order to continue to use MacSpeech Scribe, you must register your copy within four (4) days of installing it. You will need an internet connection to complete the registration.

3



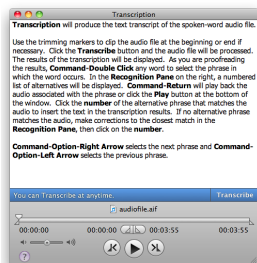
Create and train your profile.

Before MacSpeech Scribe can transcribe your audio files, you will need to create a profile and calibrate MacSpeech Scribe for each device you use. (You can create up to six profiles per license.) Scribe will prompt you to name and create a profile.

You will need to provide MacSpeech Scribe with an audio file of at least 120 seconds in one of the following formats:

- .wav
- .aif
- .aiff
- .mp4
- .m4a
- .m4v

4



Transcribe.

You can now use MacSpeech Scribe to transcribe audio files. MacSpeech Scribe works best with audio files comprised of only one voice. To begin transcribing, press the Transcribe button and choose an audio file. The Recognition window allows you to make necessary corrections. When transcription, corrections and edits are complete, save the file or simply copy and paste the results into another application.

MacSpeech Scribe Quick Tips

Registering MacSpeech Scribe

MacSpeech Scribe requires you to register within four days of when it is installed. You'll need an Internet connection to register. You will be asked to register each time you launch the program until you register.

Getting the best accuracy

Sometimes, the software might transcribe something that sounds like what you said, but is not quite right. The Recognition window gives you a chance to listen and correct the text, one phrase at a time.

Creating best quality audio

Use your digital voice recorder, iPhone/iPod Touch or computer to create high quality spoken-word audio files. MacSpeech Scribe requires audio files with a minimum sampling rate of 11.025Khz.

Using a high quality microphone

While it's possible to use the microphone built in to your computer, you will generally get better results if you use a higher quality voice microphone or headset with a boom microphone.

Minimizing background noise

You will achieve the highest transcribing accuracy if your recording has little or no background noise. Perform recordings in a quiet environment without extraneous sounds, including being near a fan, appliance, etc.

Speaking clearly and naturally

Use your natural inflection, not a monotone voice. Pronounce words clearly and distinctly. Try to speak in complete phrases or sentences and speak all punctuation. This provides context and improves accuracy.

Using Vocabulary Training

The Vocabulary Training feature lets you use other documents you've written to help familiarize MacSpeech Scribe with your vocabulary and writing style, which can increase transcription accuracy. See the MacSpeech Scribe User Manual for more information about this feature.

Getting Help

The best way to get help is to start with the **User Manual** located under the Help menu. For further assistance visit the MacSpeech support site at:

<http://www.macspeech.com/support>